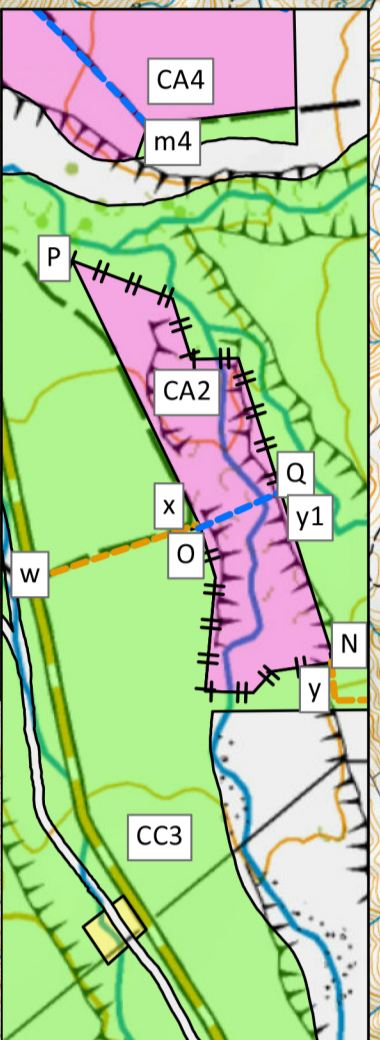
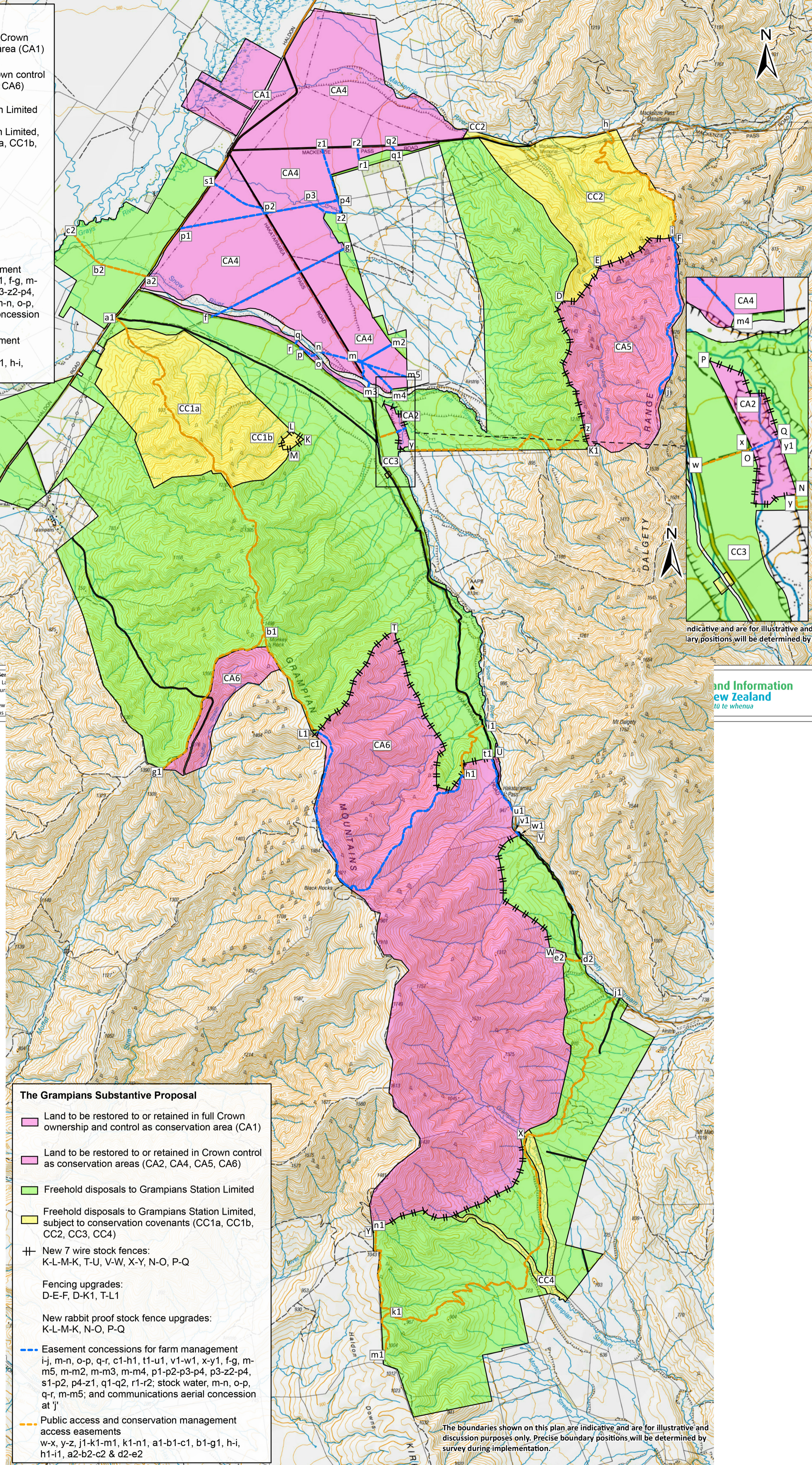


The Grampians Substantive Proposal

- Land to be restored to or retained in full Crown ownership and control as conservation area (CA1)
- Land to be restored to or retained in Crown control as conservation areas (CA2, CA4, CA5, CA6)
- Freehold disposals to Grampians Station Limited
- Freehold disposals to Grampians Station Limited, subject to conservation covenants (CC1a, CC1b, CC2, CC3, CC4)
- New 7 wire stock fences: K-L-M-K, T-U, V-W, X-Y, N-O, P-Q
- Fencing upgrades: D-E-F, D-K1, T-L1
- New rabbit proof stock fence upgrades: K-L-M-K, N-O, P-Q
- Easement concessions for farm management i-j, m-n, o-p, q-r, c1-h1, t1-u1, v1-w1, x-y1, f-g, m-m5, m-m2, m-m3, m-m4, p1-p2-p3-p4, p3-z2-p4, s1-p2, p4-z1, q1-q2, r1-r2; stock water, m-n, o-p, q-r, m-m5; and communications aerial concession at 'j'
- Public access and conservation management access easements w-x, y-z, j1-k1-m1, k1-n1, a1-b1-c1, b1-g1, h-i, h1-i1, a2-b2-c2 & d2-e2



indicative and are for illustrative and discussion purposes only. Precise boundary positions will be determined by survey during implementation.

- The Grampians Substantive Proposal**
- Land to be restored to or retained in full Crown ownership and control as conservation area (CA1)
 - Land to be restored to or retained in Crown control as conservation areas (CA2, CA4, CA5, CA6)
 - Freehold disposals to Grampians Station Limited
 - Freehold disposals to Grampians Station Limited, subject to conservation covenants (CC1a, CC1b, CC2, CC3, CC4)
 - New 7 wire stock fences: K-L-M-K, T-U, V-W, X-Y, N-O, P-Q
 - Fencing upgrades: D-E-F, D-K1, T-L1
 - New rabbit proof stock fence upgrades: K-L-M-K, N-O, P-Q
 - Easement concessions for farm management i-j, m-n, o-p, q-r, c1-h1, t1-u1, v1-w1, x-y1, f-g, m-m5, m-m2, m-m3, m-m4, p1-p2-p3-p4, p3-z2-p4, s1-p2, p4-z1, q1-q2, r1-r2; stock water, m-n, o-p, q-r, m-m5; and communications aerial concession at 'j'
 - Public access and conservation management access easements w-x, y-z, j1-k1-m1, k1-n1, a1-b1-c1, b1-g1, h-i, h1-i1, a2-b2-c2 & d2-e2

The boundaries shown on this plan are indicative and are for illustrative and discussion purposes only. Precise boundary positions will be determined by survey during implementation.

the propertygroup
Corporate Property Advisors and Negotiators

Imagery sourced from: LINZ Data Services
Property boundaries sourced from LINZ Data Services
Property boundaries accuracy: +/- 30m in rural areas.
Coordinate System: NZGD 2000 New Zealand Transverse Mercator
Datum: NZGD 2000 // This map was

Land Information New Zealand
Toitū te Whenua