



Land Information
New Zealand
Toitū te whenua

Crown Pastoral Land Review of Other Crown Land

Property names:
Glenaray & Whitecomb

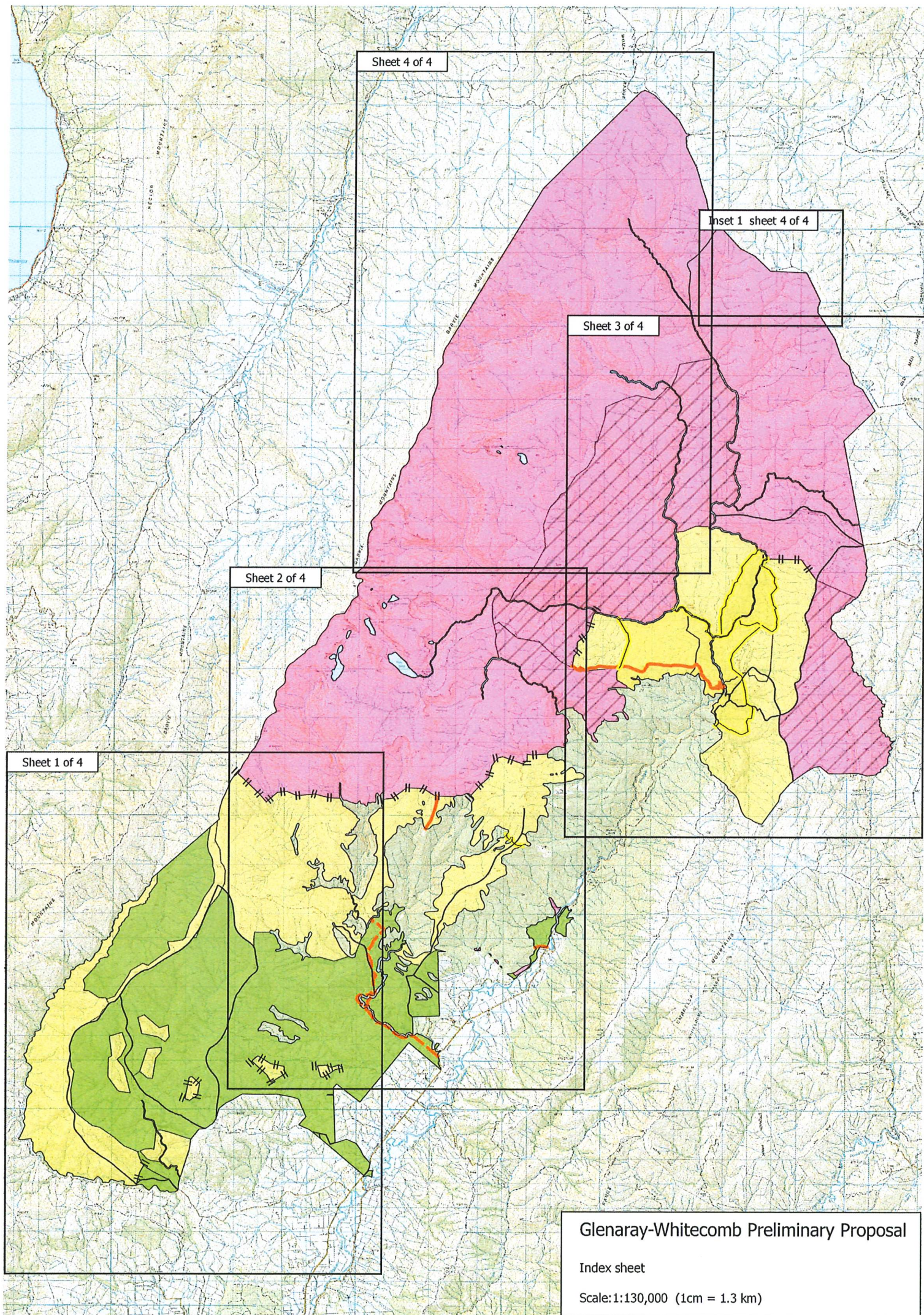
Property numbers:
Ps008 & Ps017

Preliminary Proposal Designation Plan

The attached plan is a copy of the Designation Plan included in the Preliminary Proposal for the above review.

The report attached is released under the Official Information Act 1982.

November 2019



Sheet 4 of 4

Inset 1 sheet 4 of 4

Sheet 3 of 4

Sheet 2 of 4

Sheet 1 of 4

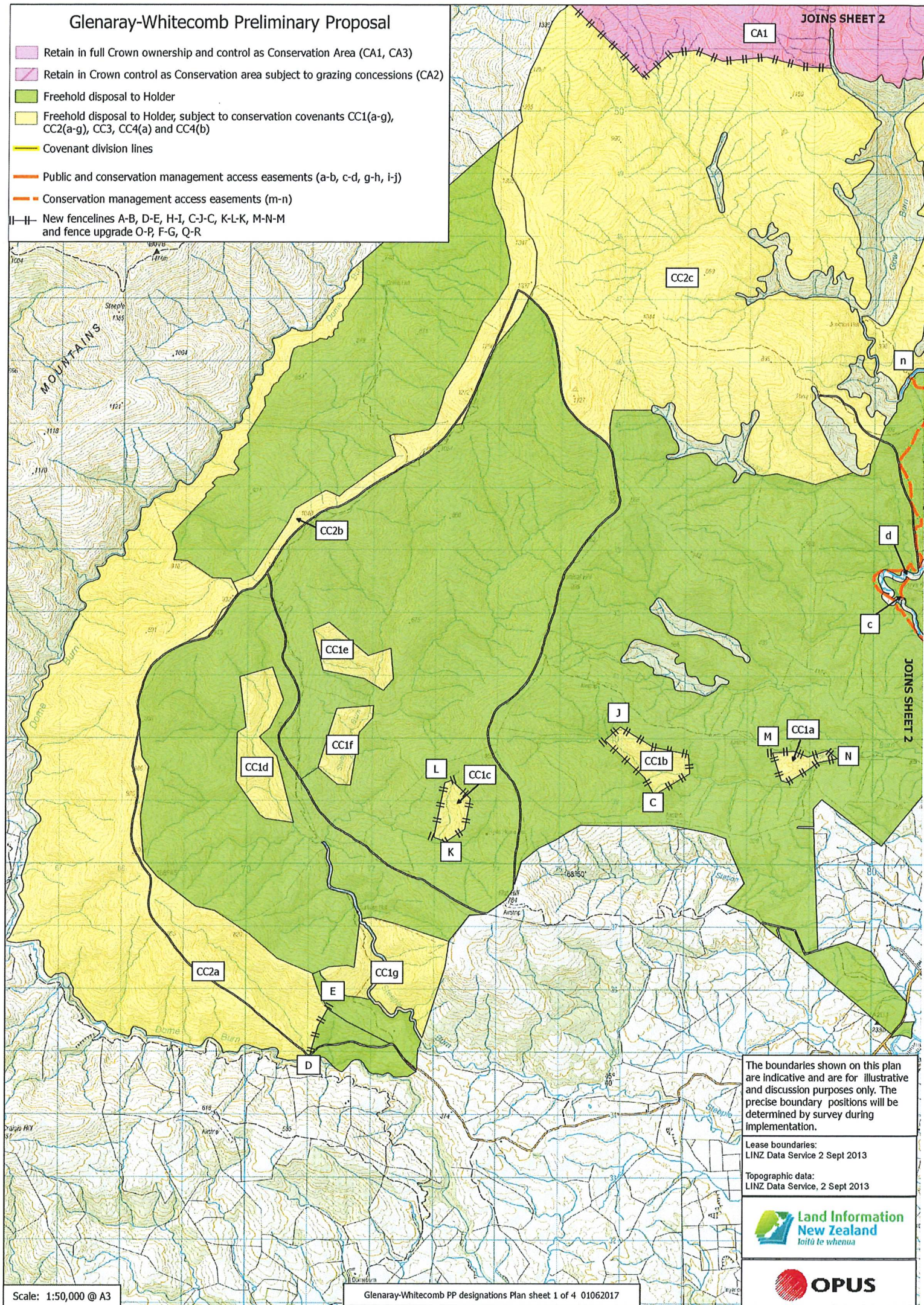
Glenarary-Whitecomb Preliminary Proposal

Index sheet

Scale: 1:130,000 (1cm = 1.3 km)

Glenaray-Whitecomb Preliminary Proposal

- Retain in full Crown ownership and control as Conservation Area (CA1, CA3)
- Retain in Crown control as Conservation area subject to grazing concessions (CA2)
- Freehold disposal to Holder
- Freehold disposal to Holder, subject to conservation covenants CC1(a-g), CC2(a-g), CC3, CC4(a) and CC4(b)
- Covenant division lines
- Public and conservation management access easements (a-b, c-d, g-h, i-j)
- Conservation management access easements (m-n)
- New fencelines A-B, D-E, H-I, C-J-C, K-L-K, M-N-M and fence upgrade O-P, F-G, Q-R

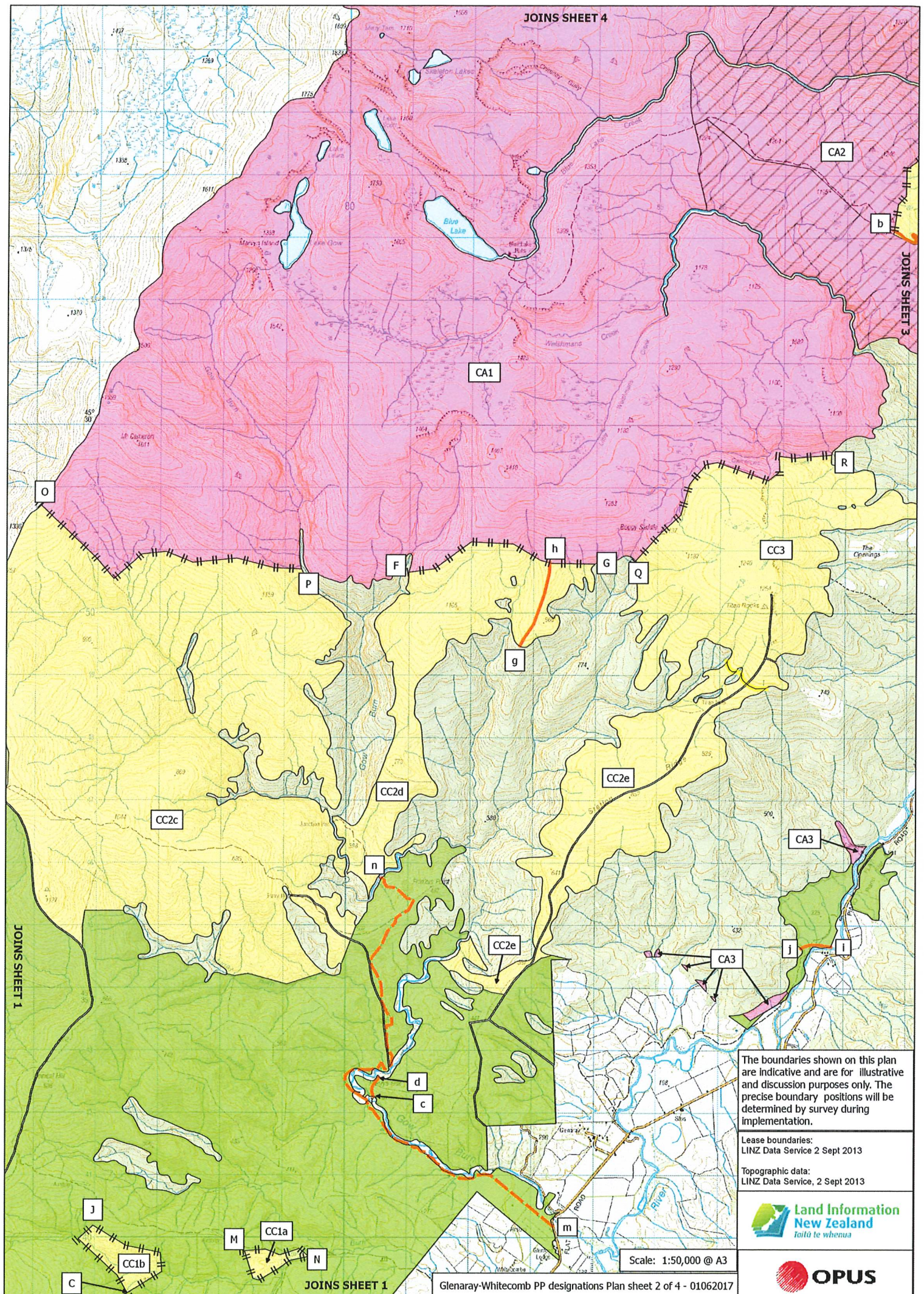


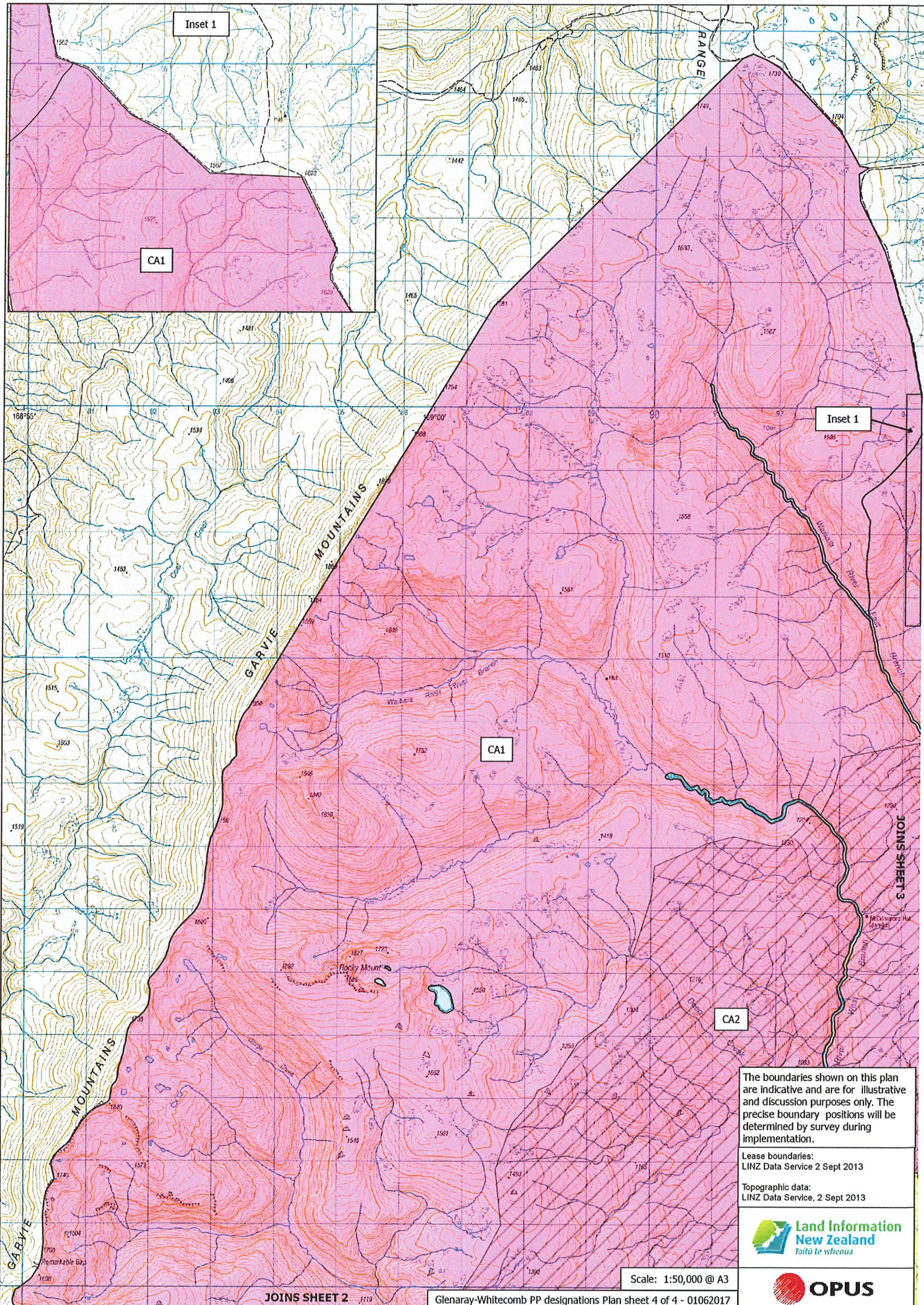
The boundaries shown on this plan are indicative and are for illustrative and discussion purposes only. The precise boundary positions will be determined by survey during implementation.

Lease boundaries:
LINZ Data Service 2 Sept 2013

Topographic data:
LINZ Data Service, 2 Sept 2013







The boundaries shown on this plan are indicative and are for illustrative and discussion purposes only. The precise boundary positions will be determined by survey during implementation.

Lease boundaries:
LINZ Data Service 2 Sept 2013

Topographic data:
LINZ Data Service, 2 Sept 2013



Scale: 1:50,000 @ A3

JOINS SHEET 2

Glenaray-Whitecomb PP designations Plan sheet 4 of 4 - 01062017